

## Deal, Dover & Sandwich District Inclusion Plan

Dover District LIFT Executive has agreed this Inclusion Plan to drive the development of inclusive practice across the district. Dover District LIFT Executive has designed this plan to be an influencing plan across the district.

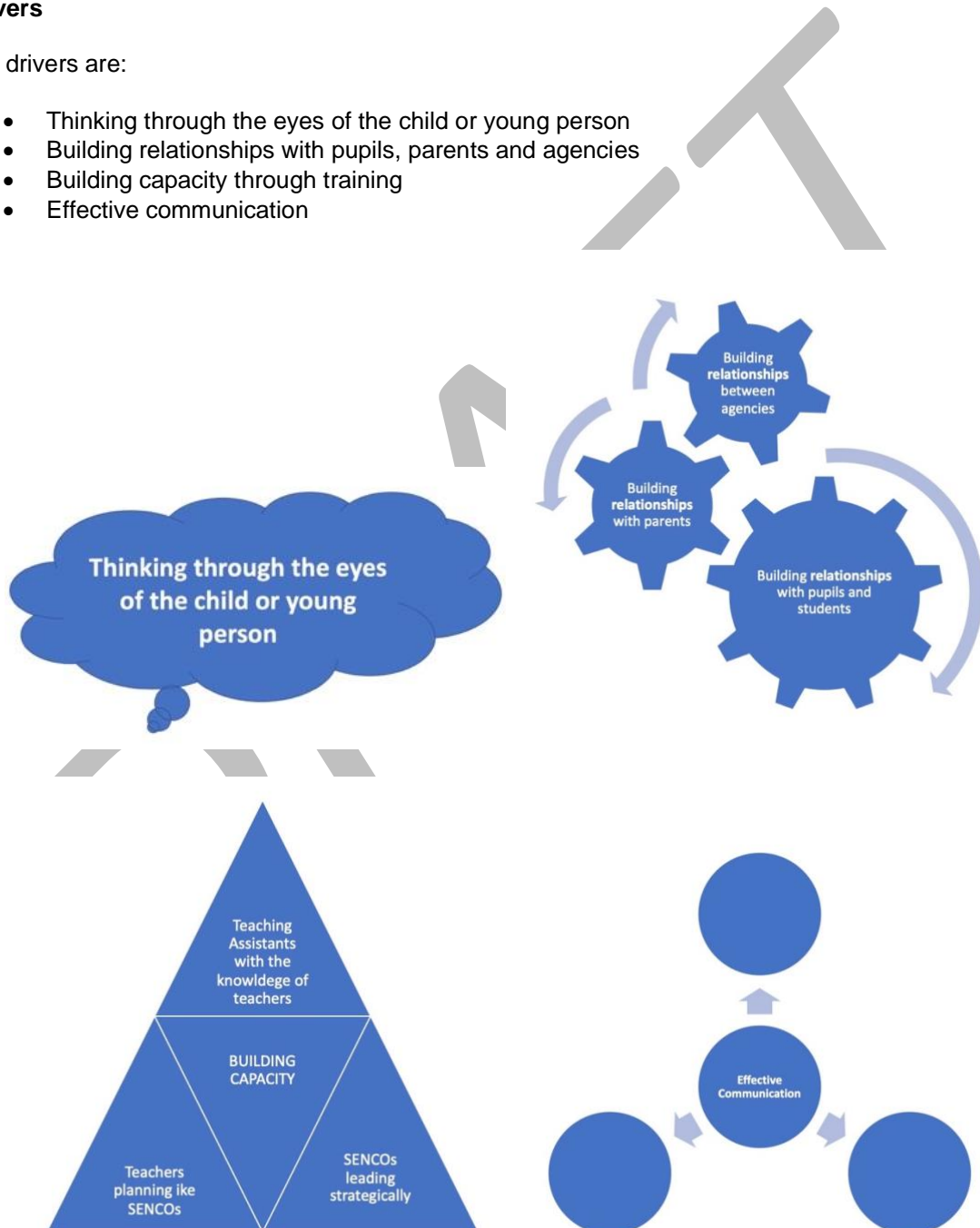
### Inclusion

While the LIFT Executive recognise there are different aspects to effective inclusion, our plan focuses on drivers, which we believe are central to the development of inclusive practice. The LIFT Executive is committed to promoting these drivers within the work of the LIFT Executive and partner agencies.

### Drivers

Our drivers are:

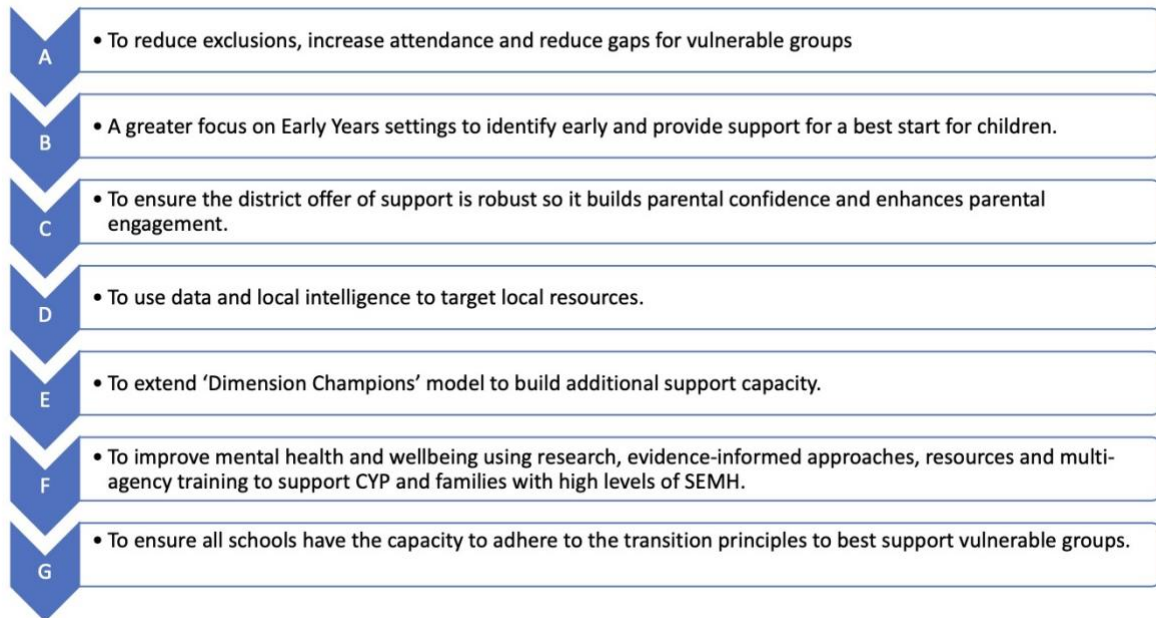
- Thinking through the eyes of the child or young person
- Building relationships with pupils, parents and agencies
- Building capacity through training
- Effective communication



Dover LIFT Executive is identifying projects within the district within which these drivers are key influencers to promote inclusion. Dover LIFT Executive will be tracking the progress of these projects against the district priorities.

### Priorities for the Dover District Inclusion Plan

Dover LIFT Executive has identified priorities we are focused on achieving through our work.



*(Note: Dimension Champions includes the current development of SEMH Champions and ASD Champions)*

### Stages of Implementation

#### Stage 1

Agencies within the LIFT Executive reviewing and articulating what these drivers mean within their work

#### Stage 2

LIFT Executive identifying how these drivers will influence current and future inclusive projects

#### Stage 3

Reviewing and collating the impact of the use of the inclusive drivers across the work of the LIFT Executive

### Inclusive Projects

Inclusion projects within the Dover District within which the drivers are being used:

Project	Focus	Lead	Contact