



New SENCO training.

Tracey Cook

Specialist Teacher

Session 2
Thursday 17th
November 1-3pm



The session

THE SESSION

CHECK IN

MCS

COFFEE
BREAK

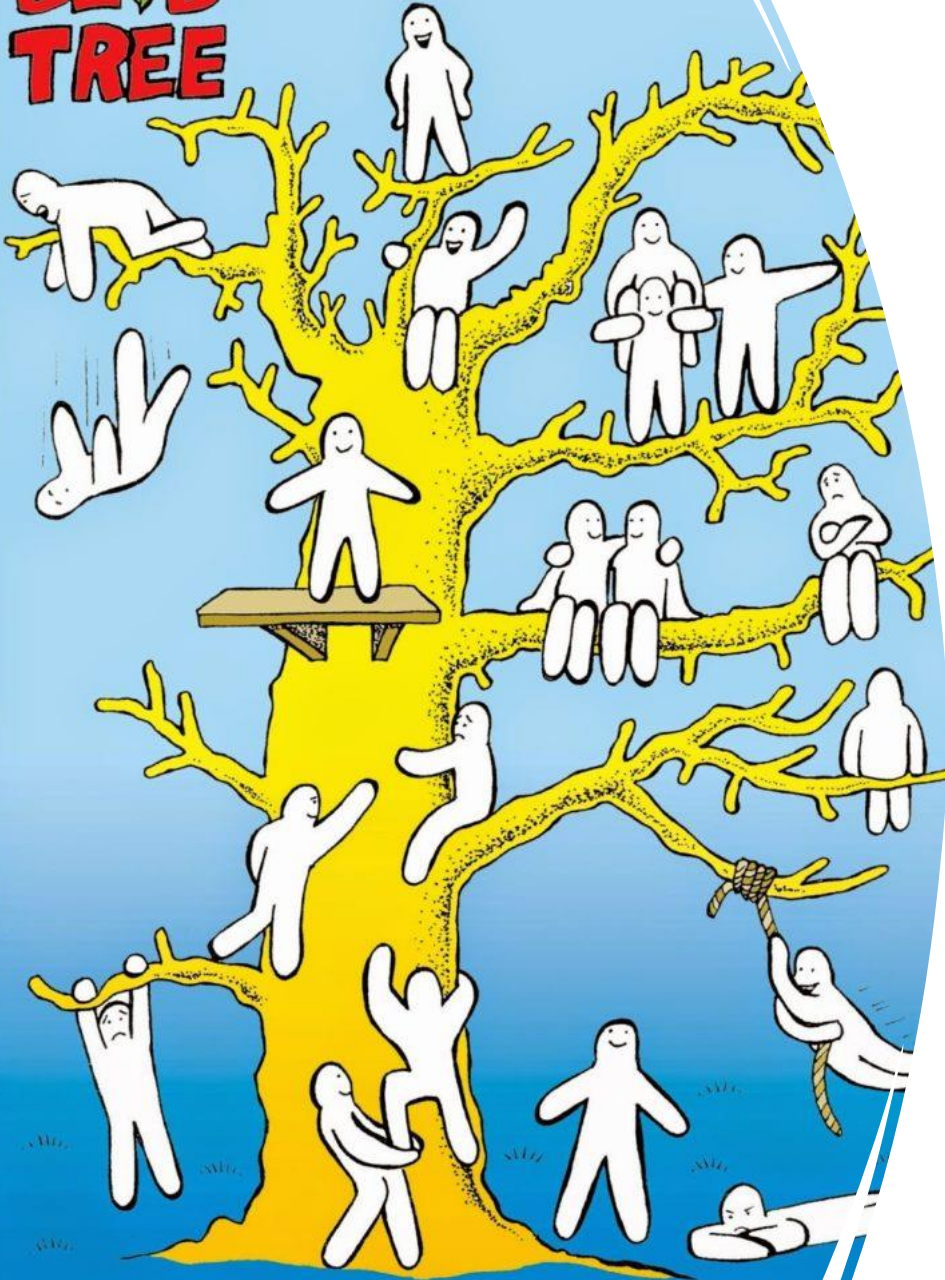
LOUISE TOP
TEN TIPS
FOR SENCO'S

Q&A

WHAT'S
AVAILABLE

STARTING
POINTS

**BLOB
TREE**



Today's check in – The Blob Tree

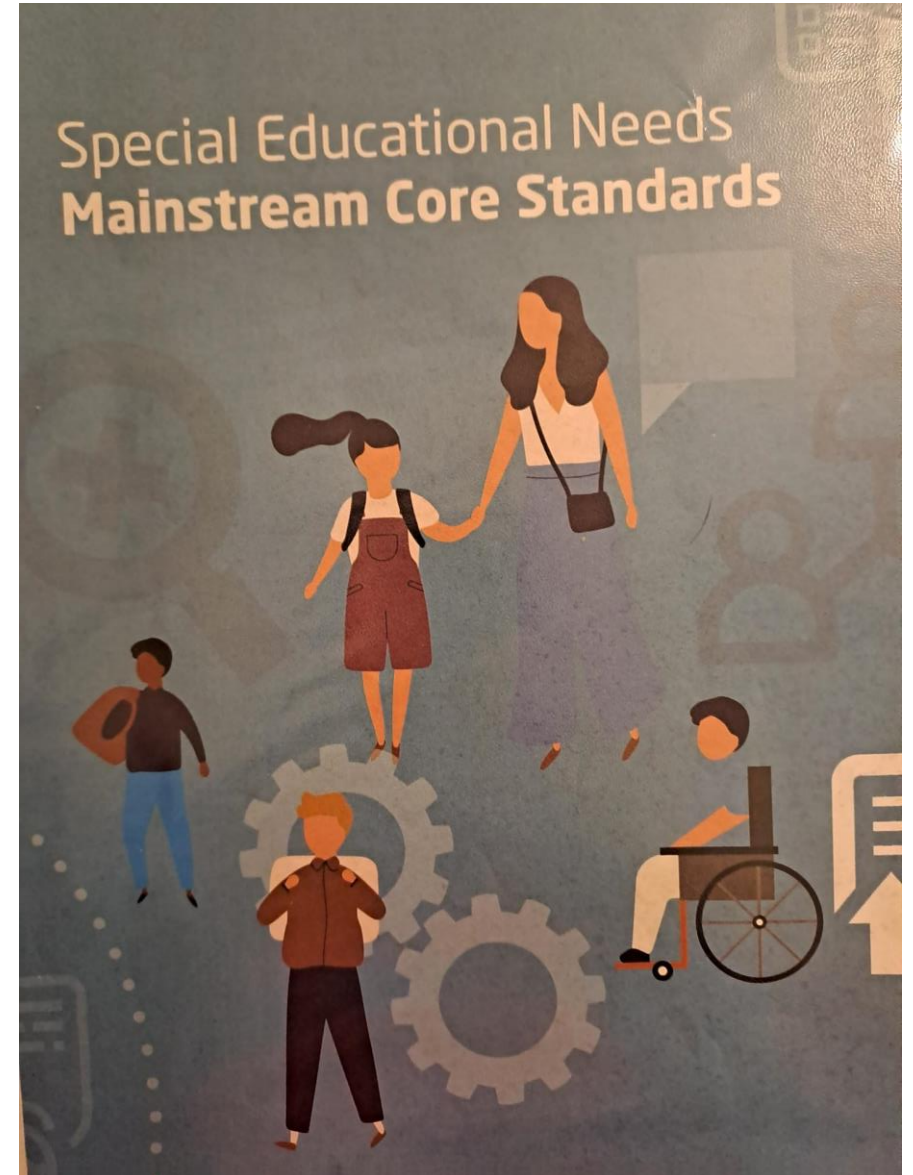
- <https://www.blobtree.com>
- [Blob Shop - Home of the Blob Tree Communication Tools. | blobshop](#)

Mainstream Core Standards

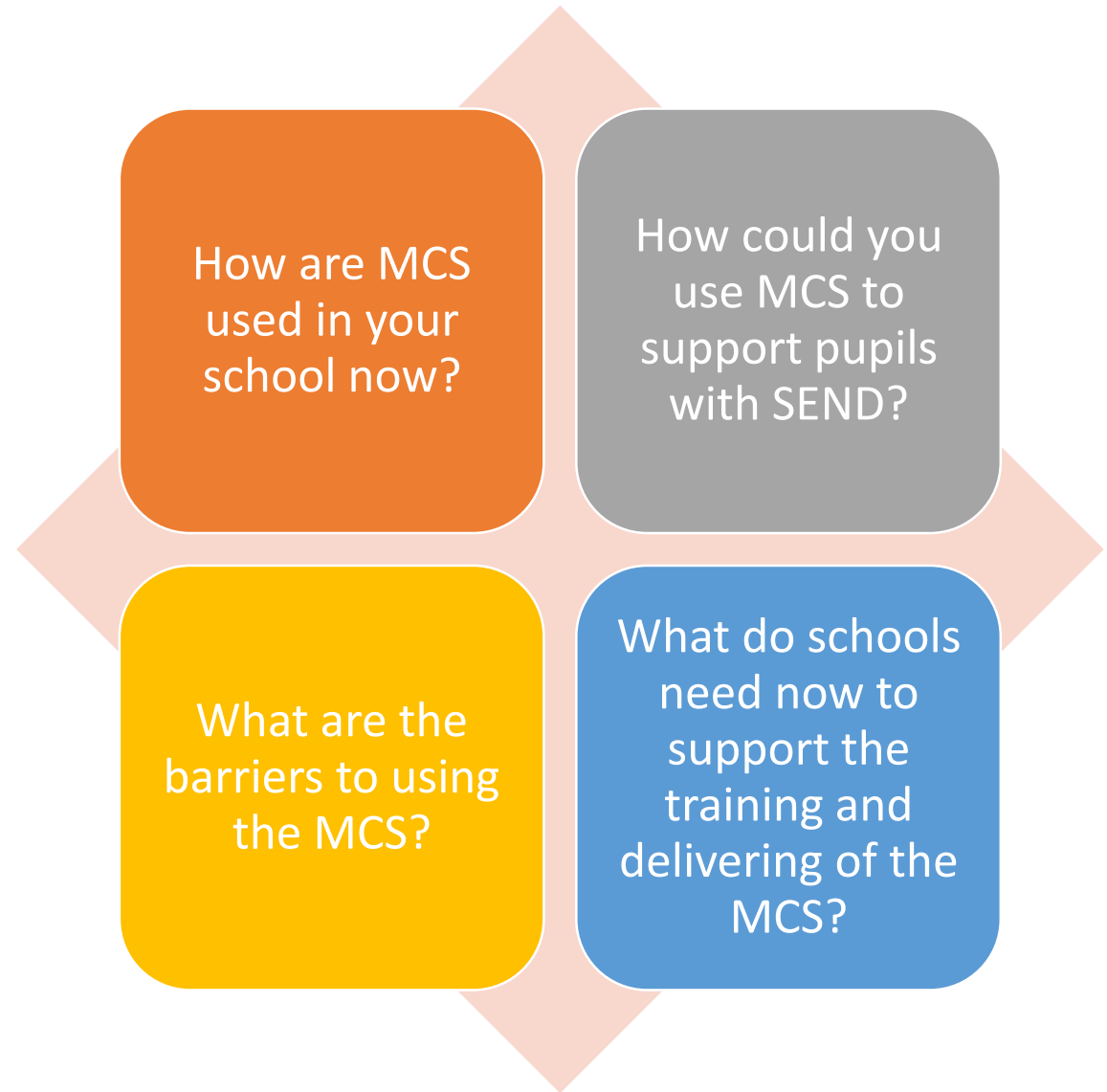
- **Guest speaker – Louise Buckingham - Dudley SENCO at Shatterlocks Infant School and Barton Junior School**

<https://www.kent.gov.uk/.../send-strategies-and-policies/send-mainstream-core-standard>

[Special educational needs mainstream core standards \(kelsi.org.uk\)](https://www.kelsi.org.uk)



MCS – Consider.....



What's available? Activity

- What is available in our area?
- Who to go to for support/advice?



What's available in our area?

- Local offer [SEND local offer - Kent County Council](#)
 - Sign up for automatic updates - [About the SEND local offer - Kent County Council](#)
 - CDP Online
 - STLS
 - Nasen
 - Kelsi
 - SEN South
 - KEPs
 - Colleagues
 - Creative Education
 - Kent Autistic Trust
 - Kent Gov
- Early Help
 - Previous school/class teacher
 - Parents
 - The child
 - SEN Code of Practice
 - PIAS
 - National Autistic Trust

Sign up to the newsletters!

The local SEND Offer

- [About the SEND local offer - Kent County Council](#)
- Look at – The **easy read guide** The Local Offer [About the SEND local offer - Kent County Council](https://www.kent.gov.uk/education-and-children/special-educational-needs/about-the-send-local-offer) <https://www.kent.gov.uk/education-and-children/special-educational-needs/about-the-send-local-offer> and the **jargon buster** [Jargon Buster | IASK](#) (<https://www.iask.org.uk/parents-and-carers/jargon-buster/>) and the **community directory** Local Offer [Local Offer - Search Results | Local Kent Directory](#) <https://local.kent.gov.uk/kb5/kent/directory/results.action?localofferchannel=0>



Lift

Clinics

Parent clinics

Website – information, training videos

SENCO Forums

Email /phone for advice

**Identifying the Difference
Between EAL and SEN Pupils
(Primary and Secondary)
29.11.22 Zoom**

**Countywide SENCO Forum –
Primary 08.12.8-9.30am or
1.30-3pm**

**Mainstream Core Standards
Training for Subject and
Middle Leaders-Secondary
(two sessions) 11.01.23 4-
6pm**

**Planning and Delivering
Family Learning Sessions
which impact on
achievement of Children
with English as an Additional
Language 11.01.23 12.45**

**An Inclusive Curriculum
for SEND Pupils beyond
English and Maths
17.01.1.30-4pm**

**Teaching Assistants - Are You
New To The Role? - Tuesday
17 January 2023 - 09:30-
12:30**

**Countywide SENCO Forum –
Secondary Wednesday 1
February 2023 - 08:00-09:30**

**Supporting Gender Variant
Children and Trans Young
People - Wednesday 1
February 2023 - 09:30-12:3**

**The Effective Teaching
Toolkit - Scaffolding Or
Differentiation - Wednesday
8 February 2023 - 13:00-
15:00**

**C O
P n
D l
i
n
e**

NASEN

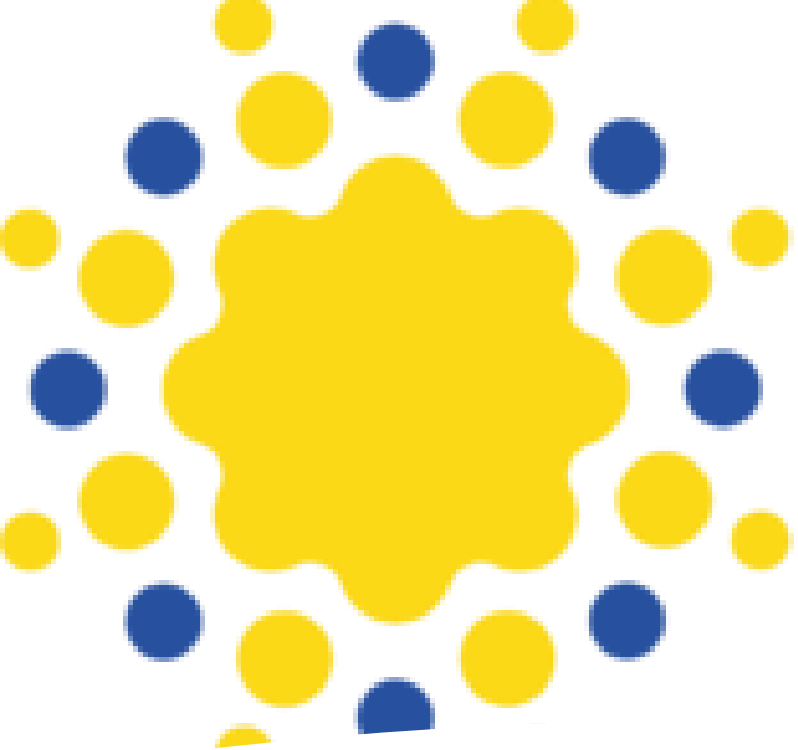
- Home page | Nasen <https://nasen.org.uk>
- Join for free

The image shows the Nasen logo on a dark green background. The word "nasen" is written in a white, lowercase, sans-serif font. Below it, the tagline "Helping Everyone Achieve" is written in a smaller, white, sans-serif font, followed by three small white squares.

nasen
Helping Everyone Achieve ■■■

Kelsi

- [Home - KELSI](#)
- KELSI is an online resource for education professionals in Kent. Provided by Kent County Council.
- www.kelsi.org.uk
- SEND – who's who in KCC SEND, SEND information hub, EP's, Inclusion (STLS, CATIE, MCS,) Intergrated children's services (Early Help)



creative

EDUCATION

- [Discover A New World of Professional Learning - Creative Education](#)
- www.creativeeducation.co.uk

Kent Autistic Trust



the
kent autistic trust
a better life, a better future

[Our Services | Kent Autistic Trust](#)
www.kentautistictrust.org

Supports before diagnosis
Application form on the site
Useful links and resources

Kent.gov.uk

- [Education and children - Kent County Council](#)
- www.kent.gov.uk
- Education and children – Activities outside school,
Headstart Kent
educating your child at home
Schools
college, 6th form, employment and training
Children and pre-school
SEND
Protecting children





Starting points - activity

**In your groups, discuss
what has worked well for
you.**

List

One person to feedback

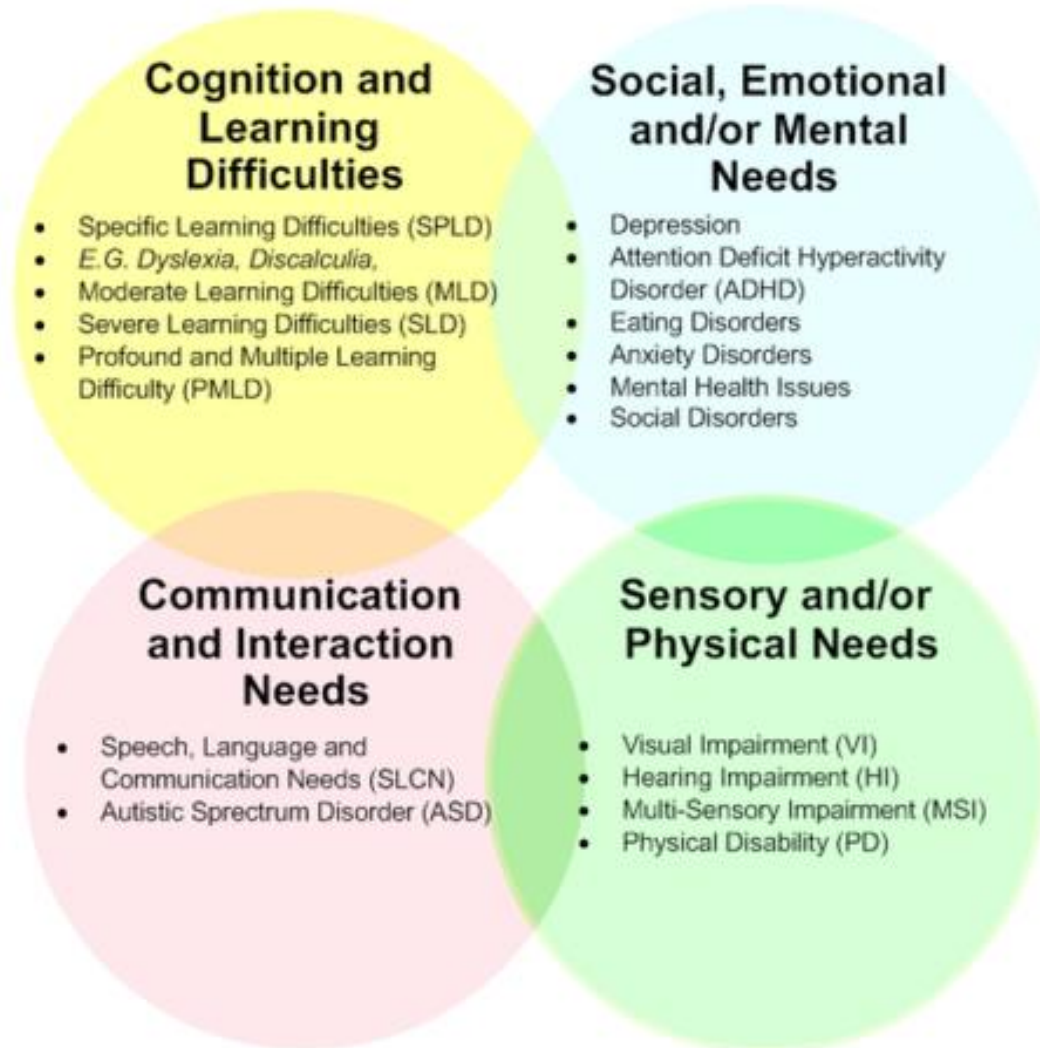
Add to list.



Starting point?

- Request for support form
- Observation
- Discussion with teacher
- Identify area of need or priority area of need
- MCS
- SDQ
- Language for learning assessments
- Boxall profile
- Thrive profile
- Sensory Checklist
- Language Link
- Speech Link
- ABC chart

Areas of need? How to identify them



Webinar: Understanding and Identifying Areas of Need - [Webinar: Understanding and Identifying Areas of Need | SendGateway](#)

[SEN and Medical Categories Guidance - January 2019 4.pdf \(education-ni.gov.uk\)](#)

The SEND Gateway is an online portal for education professionals working mainly in schools. It offers free and easy access to information, resources and training for meeting the needs of children with special educational needs and disabilities (SEND).

<http://www.sendgateway.org.uk/>

<https://send.excellencegateway.org.uk/>

Goodbye

**Next session:
Thursday 8th
December**

